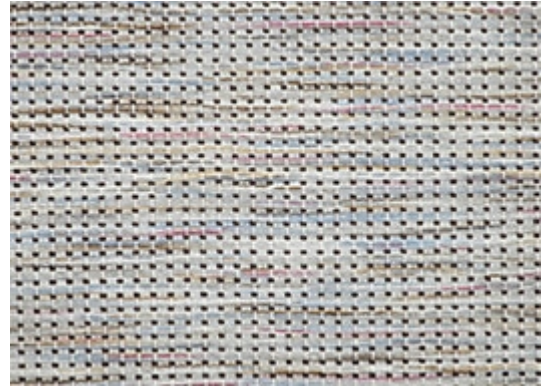
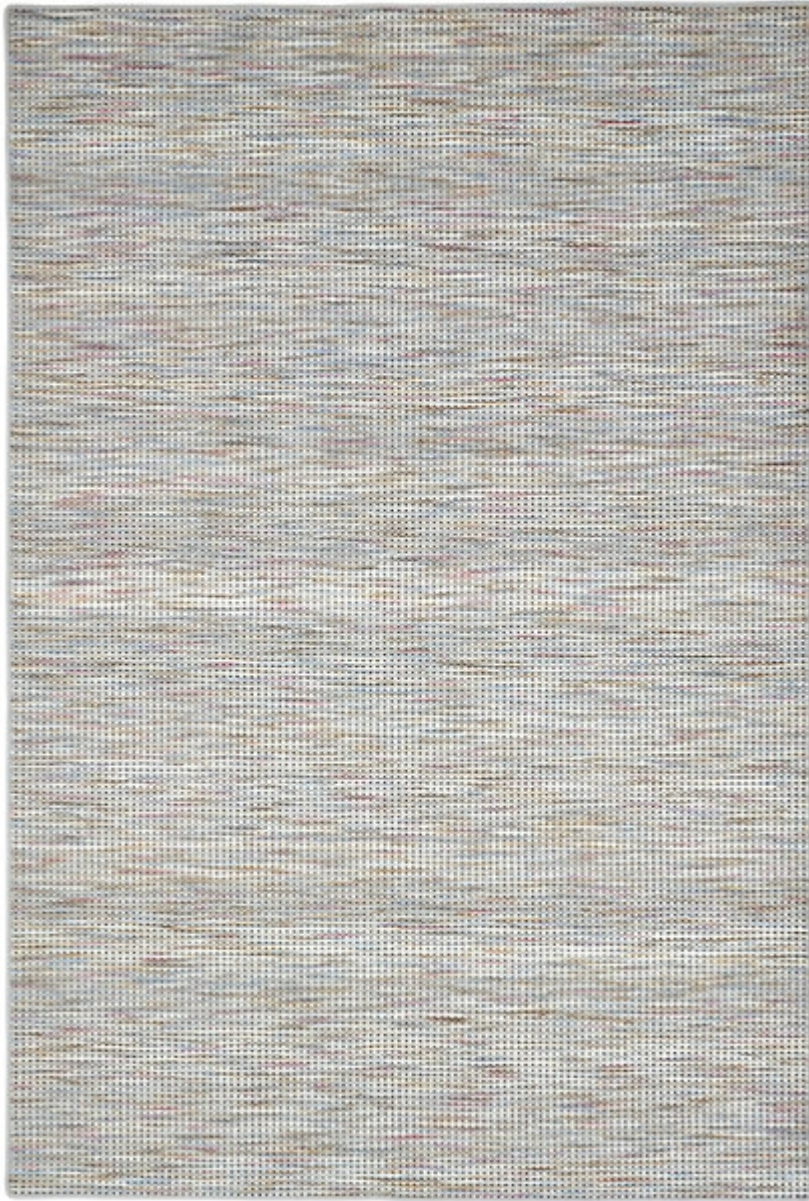


STARK

CARPET & RUGS



KATARA - SUNKISSED

SKU: E06SNKDWIDE2078
FULL WIDTH: 16 FT 4 IN
CONSTRUCTION: FLATWEAVE HAND-MADE
COMPOSITION: 80% WOOL / 10% POLYESTER / 10% COTTON
TEXTURE: LOOP PILE
ORIGIN: INDIA

AVAILABLE IN 3 COLORWAYS

Any size available made-to-order.
Additional options available on request.

STARKCARPET.COM